

Catalogue No.

AB9921-100

Qty:

300 µg

Anti-mKalama

Source: Goat

General description: Goat polyclonal antibody to mKalama. Azurite is a basic (constitutively fluorescent) fluorescent protein engineered from green fluorescent protein (GFP) isolated from *Aequorea victoria*. It has moderate acid sensitivity. mKalama is a ~27 kDa protein that is optimally excited at a 385 nm and has a maximum of emission at 456 nm. It is used in research as a reporter to label and study the biology of the cell using a wide range of applications.

Alternative names: green fluorescent protein antibody.

Form: Polyclonal antibody supplied as a 100 µl (3 mg/ml) aliquot in PBS, 20% glycerol and 0.05% sodium azide. This antibody is epitope-affinity purified from goat antiserum.

Immunogen: Purified recombinant fluorescent protein produced in *E. coli*.

Specificity: In 293HEK cells transfected with cds plasmid detects a band of 27 kDa by Western blot. This antibody does not recognize RFP (red fluorescent protein).

Reactivity: Reacts with Transfected cells proteins

Sample	WB	IHC (F)	IHC (P)	IF	ELISA	IEM
Transfected cells	+++	+++	+++	+++	ND	+++

+++ excellent, ++ good, + poor, ND not determined

Usage:

WB: 1:500-1:5,000

IHC (F): 1:50-1:500

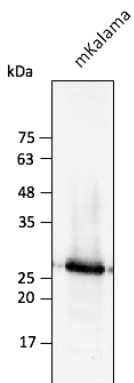
IHC (P): 1:50-1:500

IF: 1:50-1:500

IEM: 1:50-1:500

Storage: For continuous use, store at 2-8 C for one-two days. For extended storage, store in -20 C freezer. Working dilution samples should be discarded if not used within 12 hours.

Special instructions: The antibody solution should be gently mixed before use..



Anti-mKalama Ab at 1/2,500 dilution using HEK293 transfected cell lysates at 30 μ g per lane; rabbit polyclonal to goat IgG (HRP) at 1/10,000 dilution;

For research use only, not for diagnostic use

SICGEN's Proprietary Immunogen Policy

In order to produce high specific antibodies SICGEN has invested a lot of time and effort into selecting immunogen sequences. SICGEN has decided to protect this information by not publishing it on the website. However, these sequences are available on request.